

## Jewellery, Watches, Coins & Silver, 30th Dec, 2024 18:30

- 1 A smokey quartz ring and a purple paste ring; the first ring comprising a large oval-cut smokey quartz, claw-set to a lattice gallery and shank in yellow metal stamped '9ct', size P; together with a purple paste cocktail ring in 9ct gold, size O; Total weight of items 16.5 grams. (2) **£200-300**



- 2 A Mabé pearl dress ring, comprising a round blister pearl of 15.2 mm, in a trefoil surround, leading to a tapered D-section shank in yellow metal stamped '14K', ring head 2.2 cm wide, size O½, 7.1 grams. **£200-300**



- 3 An opal ring together with a paste silver gilt gypsy set ring and an opal doublet ring; A graduating five-stone opal ring set in 18ct gold, one stone deficient, UK hallmarks for 1864 and makers mark relating to H, size M ½. Williamson Ltd; A Paste gypsy set silver gilt ring together with a green box, broken shank; An opal doublet ring set in yellow metal stamped 750, size N ½; Total weighable 4.8g (3) **£200-300**



- 4 Two diamond set rings; One diamond cluster set ring in 18ct gold, estimated total diamond carat weight 0.28ct, dated 1983, size P ½; Five-stone diamond ring in yellow metal testing as 18ct, estimated total diamond carat weight 0.29ct, size L ½; Total weight 5g (2). **£250-350**



- 5 A small group of jewellery; including a sapphire, diamond and possible replacements ring in 9ct gold, size S ½; A three stone sapphire and cubic zirconia cluster ring in 9ct gold, size O; A sapphire and cubic zirconia cluster ring in gilt metal, size P ½; A 9ct gold and cubic zirconia ring, size P ½, A 9ct gold band with Lord of the Rings style inscription, size Q; A sapphire crucifix, set in yellow metal stamped 375; A cubic zirconia figural pendant, set in yellow metal, bale stamped 375; A white metal and cubic zirconia bracelet, marked 9ct with a later added base metal clasp; Total weighable 17.8g (8) **£200-300**



## Jewellery, Watches, Coins & Silver, 30th Dec, 2024 18:30

- 6 A suffragette brooch and a cameo brooch; the brooch of giardinetti form, set with split pearls, circular-cut amethysts and peridots, in yellow metal marked '9ct' along with maker's mark 'GV&Co.', 2.7 cm wide; a shell cameo brooch depicting the side profile of a lady, in a bevelled surround in yellow metal marked '750', 4.5 x 3.5 cm; Total weight of items 10.0 grams. (2) **£200-300**



- 7 A pair of diamond set earrings of lashing cross design against a rectangular white metal base, estimated total diamond carat weight 0.30ct, to post fittings, Italian assay marks 750, 19mm in length, one butterfly clasp a later replacement stamped 925, Total weight 10.5g. **£400-600**



- 8 Two gem-set dress rings; One amethyst claw set ring, stone measures approximately 23.1cm x 17.1cm x 11.8cm, set in yellow metal testing as 14ct, scratched 14kt, size P; One citrine claw set ring, stone measures approximately 18.1cm x 12.5cm x 4.8cm, set in yellow metal testing as 18ct, size M; Total weight 16.5g. (2). **£200-300**



- 9 A single diamond earring, estimated diamond carat weight 0.45ct, set in yellow metal testing as 14ct, fitted to post with a separate white metal la poussette back testing as silver; Total weighable 0.35g. **£400-600**



- 10 A collection of bar brooches and stick pins; to include a 9ct gold bar brooch of foliate design set with seed pearls, cased; a Victorian amethyst brooch in an embossed scrollwork mount, yellow metal testing as 14ct; a bar brooch set with an oval moonstone cabochon, metal testing as 14ct; a bar brooch with twisted details centred with a peridot, in metal marked '9ct'; an aquamarine bar brooch in metal marked '9ct'; and two stick pins one set with seed pearl another set with a pear-cut garnet; Total weighable 13.7 grams. (7) **£150-250**



## Jewellery, Watches, Coins & Silver, 30th Dec, 2024 18:30

- 11 An Edward VII full sovereign 1907, obverse bare head to the right. **£360-400**



- 12 An Elizabeth II full sovereign, 1967, young head to the right. **£360-400**



- 13 A George V half sovereign, 1912, obverse bare head to the left. **£180-220**



- 14 A George V half sovereign, 1912, obverse bare head to the left. **£180-220**



- 15 A George V half sovereign, 1913, obverse bare head to the left. **£180-220**



## Jewellery, Watches, Coins & Silver, 30th Dec, 2024 18:30

- 16 A diamond-set engagement ring and matching band, the pear-shaped cluster set with round brilliant diamonds and leading to diamond-set bifurcated shoulders, in a 9ct white gold mount, together with a 9ct white gold diamond-set eternity band, size H1/4; 4.6 grams (2) **£300-500**



- 17 A collection of four swivel fobs, set with carnelian, onyx and bloodstone and decorated with scrollwork, beading and foliate detailing, in yellow metal mounts tested as gold, together with a 9ct gold garnet-set ring and a carnelian-set seal, depicting a coat of arms featuring shells, sheaves of wheat and an oak tree, in a yellow metal mount tested as 18ct gold; 71.1 grams **£300-500**



- 18 Three rings; comprising a shell cameo ring, depicting the profile of a lady, in a yellow metal mount marked '9ct', size L, a bezel-set coral ring, in a stylised floral surround to a yellow metal mount tested as 18ct gold, size Q, together with a crossover cultured pearl-set ring, in a yellow metal mount tested as 18ct gold, size U; 12.0 grams (3) **£200-300**



- 19 A large collection of gem-set rings, including a rose-cut smoky quartz ring, several blue topaz-set rings, several rutilated quartz rings and other assorted rings, set in white metal mounts marked '925', in a fitted box; 159.1 grams (45) **£200-300**



- 20 A diamond cluster single earring, centred with an old european cut diamond of 5.2 mm, with an estimated weight of 0.54ct, in a buttercup setting encompassed with a frame of single-cut diamonds, fitted with a post and omega clip, unmarked white metal testing as 18ct, 1.1 cm wide, 2.25 grams. **£350-450**



## Jewellery, Watches, Coins & Silver, 30th Dec, 2024 18:30

- 21 Three jewellery items comprising an amethyst and seed pearl guirlande pendant, of scrolling foliate design, in yellow metal tested as 18ct gold, together with a pearl-set floral pendant, in yellow metal tested as 14ct gold, and a garnet-set ring in yellow metal tested as 9ct gold; 5.3 grams (3) **£200-300**



- 22 A group of jewellery items, to include a 9ct gold enamelled commemorative badge, a 15ct gold pearl set brooch, a square-shaped rolled-gold pin, a broken rope twist chain testing as 9ct; Total weighable 20.9g. **£200-300**



- 23 Three opal earrings, each claw-set with an oval panel of precious opals, approximately 7.2 x 5.2 mm, displaying moderate play-of-colour mostly ranging from green to purple, in close-back mounts and screw-back fittings, marked '9 carat'; together with a serpentine chain of 38.0 cm, marked '9ct'; Total weight of items 4.6 grams. (4) **£100-150**



- 24 A group of silver, white metal and other base metal jewellery, including examples of two engraved silver lockets, a silver Celtic cross pendant, a Scottish hardstone brooch, filigree bracelets and pendant, a gold-plated ladies watch, various white metal gem-set brooches, earrings and others. **£250-350**



- 25 A collection of gold-plated jewellery including a CZ-set curb link necklace, an enamel torc bangle, a hinged bangle, a Monet necklace, several gem-set rings and earrings, some missing pairs; 400.3 grams **£80-120**



## Jewellery, Watches, Coins & Silver, 30th Dec, 2024 18:30

- 26 A collection of silver and white metal jewellery items including two Gucci rings, a ridged bangle marked '925', a money clip by 'S. Kirk & Sons', a hinged bangle, of curved abstract design, marked 'Mexico 925', several gold-plated rings, several gem-set rings, multiple chains and other items; 870.9 grams **£200-300**



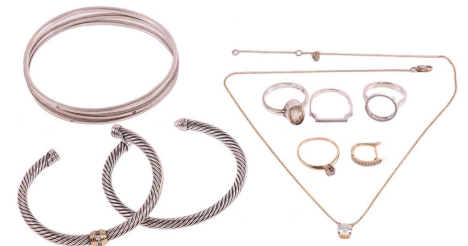
- 27 A collection of silver and white metal jewellery items including two Gucci rings, seven bangles, a gold-plated pendant depicting the continent of Africa, gem-set rings, a large identity bracelet, a heart pendant, several cultured pearl necklaces and other items; 717.9 grams **£80-120**



- 28 A collection of branded jewellery items including a Swarovski gingko bracelet, with original tags in a branded box, together with several Pandora bracelets with branded charms and rondels, a Pandora half eternity ring, and similar items; 600.9 grams **£80-120**



- 29 A small group of jewellery items, some diamond-set, including a diamond-set bangle, marked '925', a silver diamond-set open circle ring, a silver diamond-set angular eternity ring, a diamond solitaire ring, featuring a tinted round brilliant diamond measuring approximately 4mm, in a yellow metal mount marked '14KP', two torc bangles and other items; 99.2 grams **£80-120**



- 30 A group of silver, white & yellow metal and other base metal jewellery, including examples of two rose gold plated gem-set stacking rings, an open silver bangle with UK hallmarks, several white metal gem-set rings marked '925', a white metal chain necklace, various white metal earrings, two white metal cubic zirconia line bracelets and others; Total weight 485.6g. **£200-300**



## Jewellery, Watches, Coins & Silver, 30th Dec, 2024 18:30

- 31 A group of silver and white metal items including a Pandora overlapping multi-row ring, three bangles, marked '925' or 'sterling', a Gucci ring, two CZ-set tennis bracelets, a belcher-link necklace, a figaro chain necklace, several gem-set rings and other items; 351.2 grams **£80-120**



- 32 A large group of jewellery items, including a Tiffany & Co graduated bead necklace, a Georg Jensen Moebius ring by Torun, Pandora gem-set heart ring, a Pandora snake chain bracelet, several gold-plated flat snake chain necklace, some white metal jewellery pieces marked '925' and 'Mexico', gem-set rings, bracelets and pendants and other items; 1,131.50 grams **£200-300**



- 33 A carnelian bead necklace, comprising an array of faceted banded agate beads, size graduated from 20.0 to 11.6 mm, to a magnetic clasp, overall length 52.2 cm, 111.5 grams. **£100-150**



- 34 A silver and red enamel hip flask, by Deakin & Francis Ltd., Birmingham 1940, of rectangular shape with a curved top, body embellished with engine-turned pattern, the front decorated with red enamel and a vacant cartouche at the centre, 14.0 x 8.2 cm, 5.58 ozt. **£200-300**



- 35 Montblanc - a Meisterstück LeGrand Ballpoint pen, with twist mechanism, cap and barrel in black resin, gold-tone hardware, and emblem inlaid in cap top. **£100-150**



## Jewellery, Watches, Coins & Silver, 30th Dec, 2024 18:30

- 36 An opera-length cultured pearl necklace, the pearls of cream body with pink overtones and measuring approximately 7-8mm each, leading to a diamond-set clasp, featuring an old-cut diamond measuring approximately 3.8mm, with an estimated carat weight of 0.20ct, surrounded by single-cut diamonds in a yellow metal clasp tested as 9ct gold; 71.7 grams **£200-300**



- 37 A gem-set gold-plated Pandora x The Avengers ring and earrings, the ring set with six coloured cubic zirconia in gold plated marquise, circle & square shaped settings, ring size P, the earrings set in matching gold-plated settings with cubic zirconia, with a hinged hoop clasp; Total weight 4.6g. (2) **£50-70**



- 38 A Marco Bicego single earring, post deficient, the top pavé set with 15 round brilliant cut diamonds, estimated total diamond carat weight 0.22ct, set in yellow and white metal testing as 18ct, with Florentine finish, length 3.7cm; Total weight 3.1g. **£100-150**



- 39 A pair of sixpence cufflinks and a sixpence lapel pin; The cufflinks each set with a 1960 sixpence, with hinged bar terminals; The lapel pin set with 1960 sixpence, butterfly pin backing, both in white metal testing as silver; Total weight 43.5g (2). **£50-70**



- 40 A collection lot of jewellery  
Comprising of two enamelled butterfly brooches by John Atkins & Sons, three micro mosaic brooches, a gem set spider ring, an insect brooch and an additional enamelled butterfly pendant, gross weight 76.64grs (8) **£100-150**





## Jewellery, Watches, Coins & Silver, 30th Dec, 2024 18:30

- 41 A corallium rubrum cameo ring and a lapis lazuli and moonstone five-stone ring  
1st) The oval carved corallium rubrum depicting a lady in profile, within a four-claw setting, to bifurcated reeded shoulders, mounted in yellow metal, ring size N, 2nd) each claw-set oval-shaped lapis lazuli alternating with similarly-cut moonstones, mounted in 9ct yellow gold, stamped with London hallmark and maker's mark S&K, ring size P, gross weight 8.62grs (2) **£100-150**



- 42 A cultured pearl necklace with roundish pearls of 6.5 mm, hand-knotted to a pearl-set box clasp in yellow metal marked '585 14K', overall length 43.0 cm; a pair of mabe pearl clip-on earrings, set with a cultured blister pearl with high lustre approximate measuring 13.5 mm, mounted to omega clips in yellow metal marked '9kt'; and a heart-shaped locket in rolled gold; Total weighable 30.0 grams. (3) **£100-150**



- 43 A planished dress ring, with undulating edges and bead-set with three diamond accents, in white metal marked 'Au750', size R, 10.0 grams. **£350-450**



- 44 A 9ct gold gate bracelet, with cinched details and completed with a heart-shaped padlock clasp, struck with British assay marks; 13.8 grams **£300-500**



- 45 A diamond-set cluster ring, featuring a central claw-set old-cut diamond flanked by 8 illusion-set single-cut diamonds, estimated total diamond carat weight 0.45ct, set in yellow and white metal, shank testing as 18ct, size M; Total weight 2.4g **£150-250**



## Jewellery, Watches, Coins & Silver, 30th Dec, 2024 18:30

- 46 A sapphire and diamond ring, centred with an oval-cut sapphire 5.6 x 4.5 x 2.4 mm, embellished with six brilliant-cut diamonds on the sides, between trifurcated shoulders leading to a flat shank, in white metal marked '585', ring head 8.2 x 9.4 mm, size K, 3.8 grams. **£150-250**



- 47 A diamond-set link bracelet, comprising a series of articulated bar links, with the central segment encrusted with a row of baguette-cut diamonds and bordered with brilliant-cut diamonds, completed with a conforming box clasp with double safety catches, in white metal marked '375', overall length 16.7 cm, 7.1 grams.  
A424 diamond bracelet **£200-300**



- 48 A diamond-set dress ring of twisted rope design, embellished with four diagonal rows of channel-set baguette diamonds, to a tapered shank in yellow metal stamped '750', size O½, 5.2 grams. **£200-300**



- 49 A 9ct gold charm bracelet, the double curb link bracelet leading to a heart-shaped padlock clasp, with seven assorted charms, two unattached, including a pair of scissors, a gypsy caravan with a hidden compartment, a pig, a cross, a Spanish fan and a quilted purse; 21.5 grams **£300-500**



- 50 A group lot of costume jewellery, to include antique paste set brooches, a Monet brooch, marquasite set ring, various clip earrings, pill boxes, a hardstone set match box and various buttons, pins, paste set bracelets and a Givenchy bracelet. Also a crocodile cigarette case and red gem, pocket watches and various items. **£150-200**



## Jewellery, Watches, Coins & Silver, 30th Dec, 2024 18:30

- 51 A leaping hare brooch encrusted with circular-cut emeralds and diamond chip as eye, brooch fittings to the back, yellow metal testing as 14ct, 3.7 cm wide; 4.2 grams **£150-250**



- 52 A pair of gem-set rings  
1st) Composed of three slightly graduated oval-shaped aquamarine interspersed with duos of oval cabochon opals, mounted in 9ct yellow gold, stamped with partial Sheffield hallmark and maker's mark JC, ring size M 1/2, 2nd) composed of three slightly graduated collet millegrain-set circular-cut sapphires, interspersed by duos of brilliant-cut diamonds, approximately 0.05ct total, mounted in white and yellow metal, stamped 18ct, Plate, maker's mark HG&S, ring size J 1/2, gross weight 5.29grs (2) **£100-150**



- 53 A small group of jewellery items; comprising a cluster brooch featuring a circular-cut amethyst and surrounded with seed pearls, in yellow metal testing 14ct, 2.3 cm; a set of three mother-of-pearl round shirt studs, centred with seed pearl, in mount marked '18ct PL' and gilt fittings; a link bracelet with jade bead spacers, in white metal testing as silver and 9ct, 18.0 cm long; Total weight of items 14.9 grams. (3) **£150-200**



- 54 A small miscellaneous jewellery collection; to include a tiger's eye hinged bangle, to white metal mounts and fittings, marked 'silver 925', 6.0 cm in diameter; a pair of heart-shaped jadeite pendants with floral surmount, metal stamped '14K 585'; a diamond-set annular pendant in 9ct white gold, 2.0 cm drop; a pair of cultured pearl stud earrings, in a surround further adorned with diamond and rubies, in yellow metal testing as 9ct Total weight of items 37.3 grams. (5) **£150-200**



- 55 An amethyst and pearl pendant and earring suite, each piece featuring an oval amethyst surrounded by fourteen split pearls, in yellow metal mounts marked '9ct', together with an Etruscan-style locket, set with a red paste cabochon in a yellow metal setting tested as 18ct gold, featuring wirework detailing, with a glass compartment to the reverse; Total weight of items 14.2 grams. **£150-200**



## Jewellery, Watches, Coins & Silver, 30th Dec, 2024 18:30

- 56 A Tahitian cultured pearl pendant and earrings ensuite, the pendant comprising a drop of 10.5 mm, suspending on a bail in 18ct white gold, channel-set with a row of calibr -cut diamonds, British hallmarked, 2.0 cm drop; together with a matching pair of clip-on earrings, each mounted with an 11.0 mm round cultured pearl to omega clips, white metal testing as 18ct; Total weight of items 8.8 grams. (2) **£100-150**



- 57 An Edwardian gem-set brooch of foliate design, centred with a spray motif, flowerhead set with oval-cut sapphires and topped with rose-cut diamond accents, in a knife-edged surround claw-set with split pearls, brooch fittings to verso, unmarked yellow metal testing as 14ct, with half of the mount oxidised in black, measuring 3.1 cm across, 6.3 grams. **£150-200**



- 58 Three pairs of gem-set earrings  
Comprising of a pair of oval-shaped lapis lazuli earrings mounted in yellow metal with post fittings and closed-back setting, a pair of baroque imitation lapis lazuli pendent earrings, mounted in yellow metal with post fittings, together with a pair of cowrie shell overlaid with a tri-coloured metal engraved leaf, surmounted by a single claw-set brilliant-cut diamond, approximately 0.05ct total, mounted in yellow metal with post fittings, stamped 14K, gross weight 17.53grs (3) **£200-300**



- 59 Two 9ct gold rings set with paste; the first centred with a marquise-cut synthetic ruby in a rectangular surround set with paste, size N; together with a two-toned ring set with paste and floral embellishments, size O; British assay marks on both, total weight 8.0 grams. (2) **£100-150**



- 60 Two gem-set cluster rings and a pair of stud earrings; the first is a sapphire and diamond ring in 18ct yellow gold, centred with an oval-cut sapphire within a surround illusion-set with diamond accents, ring head 1.0 x 0.9 cm, size O; another similar set with an oval-cut red paste surrounded with CZs, to a silver shank, size N; and a pair of cruciform stud earrings in yellow metal marked '375', with base metal backs; Total weighable 4.6 grams. (3) **£200-300**



## Jewellery, Watches, Coins & Silver, 30th Dec, 2024 18:30

- 61 A small quantity of jewellery items comprising a 9ct yellow gold pearl solitaire ring, size N, a multi-strand bar-link necklace, marked '925', an amber cabochon ring, a pearl-set ring, in white metal marked 'sterling silver', three gem-set brooches including a mother-of-pearl brooch stamped 'Mexico' and other items; 78.3 grams (8) **£100-150**



- 62 A small collection of jewellery items; comprising a single stud earring in 18ct white gold, set with an oval emerald cabochon and two marquise-cut diamonds, 1.3 cm drop, 1.8 grams; two Coleman Douglas cultured pearl necklaces, with toggle clasp composed of Biwa pearls, cased; a paste and imitation pearl necklace; and an Adler travel clock. **£150-250**



- 63 Two cultured pearl necklaces, the first featuring pearls measuring approximately 8mm, with silver overtones, to a diamond-set roundel screw clasp, measuring approximately 45cm, together with a cultured pearl necklace, with pearls measuring approximately 7.5mm, the necklace measuring 84cm long; 107.6 grams. (2) **£100-150**



- 64 Two cultural pearl necklaces; to include a double-strand pearl necklace with uniformed beads of 7.5 mm, hand-knotted to a Modernist box clasp with garnet cluster, marked '9ct', 41.0 cm long; together with a single-strand graduated cultural pearl necklace with broken fish hook clasp marked '925', 44.0 cm long; Total weight of items 67.6 grams. (2) **£150-250**



- 65 A gem-set cluster ring, centred with a round cultured pearl of 7.3 mm, set within a frame alternating with circular-cut sapphires and single-cut diamonds, to a tapering flat shank in white metal stamped '585', ring head 1.5 cm, size P½, 6.3 grams.  
B11 Diamond / pearl ring **£200-300**



## Jewellery, Watches, Coins & Silver, 30th Dec, 2024 18:30

- 66 1.49ct melee jobbing parcel of loose diamonds in various cuts. Screened with ultraviolet light for synthetic lab-grown diamonds. **£100-150**



- 67 7.00ct melee jobbing parcel of loose old-cut diamonds. Screened with ultraviolet light for synthetic lab-grown diamonds. **£200-300**



- 68 An Edwardian diamond and pearl negligée necklace, of bow design, set with single-cut diamonds and a button pearl highlight, suspending asymmetrical knife-edged bar drops, attached to a fine cable link chain with box clasp, pendant testing as silver on 14ct, drop length 4.3 cm; chain testing as silver, overall length 39.0 cm, total weight of item 4.2 grams. **£150-250**



- 69 A collection of vintage Swatch comprising 15 models most with cases of varying age and theme, together with two further fashion watches. *Private Collection* **£100-150**



- 70 A Gucci black leather handbag, of plain tapering rectangular form and red leather interior, with a top handle as well as a detachable shoulder strap, in dust bag. **£150-200**



## Jewellery, Watches, Coins & Silver, 30th Dec, 2024 18:30

71 An Omega DeVille ladies wristwatch  
**Serial:** 5110380  
**Year:** 1970s  
**Case Material:** Stainless Steel  
**Case Diameter:** 40mm  
**Dial:** Silvered  
**Numerals:** Baton  
**Movement:** Cal 620 Mechanical  
**Strap:** Leather  
**Buckle:** Clasp  
**Box:** No  
**Papers:** No  
*Private Collection* **£100-150**



72 An Omega DeVille ladies wristwatch  
**Year:** 1980s  
**Case Material:** Gold Plated  
**Case Diameter:** 24mm  
**Dial:** Gilt  
**Numerals:** Baton  
**Movement:** Quartz  
**Strap:** Leather  
**Buckle:** Clasp  
**Box:** No  
**Papers:** No  
*Private Collection* **£80-120**



73 **Omega**  
**Gentleman's Wristwatch**  
**Model:** 5491  
**Serial:** 196 0065  
**Year:** 1970s  
**Case Material:** Gold Plated  
**Case Diameter:** 38mm  
**Dial:** Silvered  
**Numerals:** Baton  
**Movement:** Cal 1310 Quartz  
**Functions:** Day Date Aperture,  
**Strap:** Third Party Stainless Steel  
**Buckle:** Deployant  
**Box:** No  
**Papers:** No  
*Private Collection* **£100-200**



## Jewellery, Watches, Coins & Silver, 30th Dec, 2024 18:30

- 74 **TAG Heuer**  
**A Professional 6000 Series Gentleman's Wristwatch**  
**Serial:** UE5484  
**Model:** WH1115-K1  
**Year:** 1990s  
**Case Material:** Stainless Steel  
**Case Diameter:** 38mm  
**Dial:** Blue  
**Numerals:** Baton  
**Movement:** Quartz  
**Functions:** Date Aperture  
**Strap:** Stainless Steel  
**Buckle:** TAG Heuer Deployant  
**Box:** No  
**Papers:** No  
*Private Collection* **£100-150**



- 75 A laceback silver trifid spoon, London, marks rubbed, 17th century, initialed S.B. and R.B. scroll decorated terminal and bowl, 1.3 ozt, 19 cm long, **£100-150**



- 76 A pair of early 20th-century table candlesticks, Sheffield 1921 by Thomas Bradbury and Co, the squat square section with double knob stems and ogee moulded bases (loaded) 17.5 cm overall height **£150-200**



- 77 An Indian white metal shell-shaped dish, profusely decorated with animals, trees and dwellings, on three paw feet, together with a Tiffany "Sterling" basket with pierced border and swing handle, numbered 18269A Makers 1340, 4ozt, and a German white metal trumpet vase inscribed "1918 Feind, 1932 Freund", German hallmarks 800 standard, 4.1ozt. (3). **£150-200**





## Jewellery, Watches, Coins & Silver, 30th Dec, 2024 18:30

- 78 Royal Canadian Mint, 1985 \$100 gold proof coin, 16.9g, limited edition numbered 45107, in original presentation box and with paperwork. **£600-800**



- 79 Royal Canadian Mint, 1977 \$100 gold proof coin, 16.9g, limited edition numbered B09714, in original presentation box and with paperwork. **£600-800**



- 80 Royal Canadian Mint, 1987 \$100 1/4ozt fine gold coin, celebrating the 1988 Calgary Winter Olympics, limited edition numbered 85373, in original presentation box and with paperwork. **£300-400**



- 81 Royal Canadian Mint, 1990 \$100 1/4ozt fine gold coin, limited edition numbered 34623, in original presentation box and with paperwork. **£300-400**



- 82 Royal Canadian Mint, 1991 \$100 1/4ozt fine gold coin, limited edition numbered 16767, in original presentation box and with paperwork. **£300-400**



## Jewellery, Watches, Coins & Silver, 30th Dec, 2024 18:30

- 83 Royal Canadian Mint, 1983 \$100 gold proof coin, 16.9g, limited edition numbered 82885, in original presentation box and with paperwork. **£600-800**



- 84 Royal Canadian Mint, 1976 Olympics Commemorative \$100 14ct gold coin, 7.7 g in gold, from a total weight of 13.3g, in original packaging. **£300-400**



- 85 Royal Canadian Mint, 1986 \$100 gold proof coin, 16.9g, limited edition numbered 54671, in original presentation box and with paperwork. **£600-800**



- 86 Royal Canadian Mint, four Proof Coin Presentation Sets, dated 1990, 1991 1992 & 1993, boxed with paperwork, together with a US Washington Mint 'Elvis Presley' First Day Cover and Silver Proof coin (1oz), in presentation wallet, with paperwork. (Qty: 5) **£70-100**



- 87 Three gem set rings; One emerald and diamond ring, channel set with nine table cut emeralds flanked by scalloped edges set with 22 single cut diamonds, estimated total diamond carat weight 0.11ct, ring head approximately 0.7 x 1.8cm, set in a white metal split shank testing as platinum, size M, shank warped; One pavé set diamond ring, ring head approximately 0.8 x 2.1cm, set in white metal testing as 10ct, size R ½; One cubic zirconia ring, pavé set with 11 cubic zirconia in a white metal mount testing as 14ct, size J ½; Total weight 12.0g (3). **£200-300**



## Jewellery, Watches, Coins & Silver, 30th Dec, 2024 18:30

- 88 A 9ct gold modernist link bracelet, geometric hinged links of various finishings, tongue clasp and thumbpiece with additional safety clasp, with UK hallmarks and makers mark of LW, dated 1962, approximately 17.75cm long, 1.5cm wide; Total weight 35.5g. **£400-600**



- 89 A single-strand cultured pearl necklace, the graduated row of 5.7mm - 5.9mm pearls terminating with a fish hook clasp testing as silver, length of necklace 41.5cm, boxed; Total weight 18.3g. **£100-150**



- 90 A pair of cufflinks; with oval basket weave plaques to one side and hinged bar link connections with opposing torpedo links. Stamped '750'. 10.4 grams **£400-600**



- 91 A collection of jewellery items comprising an onyx and diamond-set pendant, marked '18K', an enamel sun ring and matching earrings, in yellow metal marked '750', a single diamond-set floral cluster earring in yellow metal marked '9kt', and a baby-inspired brooch marked '14K'; 8.9 grams (5) **£150-250**



- 92 A pair of fluted half hoop earrings, with hinged post backs, stamped '750'; a cultured pearl bracelet, each pearl on a wire swivel mount within a wirework frame; (one pearl deficient); a lady's Art Deco, wristwatch, stamped '14k' to a gilt metal strap and two gold mounted cheroot holders in fitted cases. Earrings 13.5 grams; bracelet 18.9 grams. **£700-1,000**



## Jewellery, Watches, Coins & Silver, 30th Dec, 2024 18:30

- 93 Four Mont Blanc black leather wallets, including a bi-fold wallet with card slots and other compartments together with three card slot holders (4).  
A422 Montblanc wallets x4 **£80-120**



- 94 A 9ct gold garnet cluster ring and a yellow metal gem set ring;  
The 9ct gold garnet cluster ring of bombe design with woven borders, claw set with 21 round cut garnets, two stones deficient, ring head approximately 1.8 x 2.3cm, UK hallmarks, size L; The yellow metal gem set ring centred with a line of six alternating round green and red paste, in Etruscan Revival style with granulation detail, ring head approximately 0.9 x 1.9cm, yellow metal testing as 22ct, size O; Total weight 12.0g. (2) **£200-300**



- 95 A Victorian half-sovereign, 1896, with a Queen Victoria veiled bust obverse and St George and the dragon reverse; 4.1 grams  
A Victorian half Sovereign **£180-220**



- 96 A George V half sovereign brooch, dated 1911, mounted in a circular pierced mount, in yellow metal tested as 18ct gold, measuring approximately 40mm, with a brooch pin fitting to the reverse; 11.3 grams **£400-500**



- 97 A pair of mother-of-pearl cufflinks, of button form, with partially worn enamel borders, each disc measuring approximately 14mm, in yellow metal marked '18ct'; 6.3 grams **£200-300**



## Jewellery, Watches, Coins & Silver, 30th Dec, 2024 18:30

- 98 A collection of jewellery items comprising a Madonna medallion and a large medallion depicting St George and the dragon, both in yellow metal tested as 18ct gold, together with an Egyptian pendant tested as high carat gold and a jester's shoe pendant, set with turquoise, in yellow metal tested as high carat gold; 12.9 grams (4) **£250-350**



- 99 A three-stone green tourmaline and diamond cluster ring, a signet ring and a yellow metal band; The three-stone green tourmaline and diamond cluster ring claw-set with three round-cut green tourmalines, with a white metal border set with single cut diamonds, yellow and white metal mount testing as 18ct, ring head approximately 0.8 x 1.7cm, size Q; The signet ring inlaid with onyx with an overlaid yellow metal plaque stamped 'M' and filled with red enamel, the border of foliate design, ring head approximately 1.9 x 1.6cm, set in yellow metal testing as 18ct, size N ½; The yellow metal band approximately 0.4cm wide, internally engraved, yellow metal testing as 18ct, size R; Total weight 14.9g (3). **£300-400**



- 100 An enamel flowerhead ring, the curved blue enamel petals surrounded a white metal and enamel stamen, set with paste, set to textured shoulders on a yellow metal mount marked '585', size P; 7.6grams **£120-180**



- 101 A cultured pearl necklace, the pearls of cream body and silver overtones, measuring approximately 6.1mm each, to a yellow metal clasp of floral design, marked '750', the necklace measuring approximately 44cm; 22.5 grams **£80-120**



- 102 Hermès - An Olympe rose metal and leather bangle, a closed bangle comprising of white calfskin leather and a rose-coloured metal finish, signed Hermès, internal diameter 6.3, width 1.1cm; Total weight 26.2g. With branded pouch and box. **£100-150**



## Jewellery, Watches, Coins & Silver, 30th Dec, 2024 18:30

- 103 Two gem-set rings; comprising an opal bombe-style ring, set with precious opal of round cabochon form, with split wire shoulders to a yellow metal mount tested as 14ct gold, size R1/2, together with a turquoise and paste cluster ring in a yellow metal mount tested as 18ct gold, size P1/2; 13.0 grams (2) **£200-300**



- 104 An Egyptian cartouche pendant on a cable link chain, the pendant decorated with a scarab beetle motif and six hieroglyphs with a filigree border, pendant 3.9cm long suspended from a tapered bail, the chain 46cm long fastened with a spring ring clasp, yellow metal pendant testing as 18ct, 9ct gold chain with UK hallmarks; Total weight 17.6g. **£400-600**



- 105 A dress ring tested as 14ct gold, of heart design, featuring mirrored hearts interspaced with paste-set white metal panels, marked '585', size P1/2; 7.7 grams **£180-220**



- 106 A ruby and diamond-set dress ring, of asymmetrical design, the bombe-style centre pavé-set with round brilliant diamonds, partially surrounded by a spray of marquise-cut rubies, in a yellow metal mount tested as 18ct gold, size M1/2; 4.9 grams **£200-300**



- 107 Hermès - a narrow 'Clic HH So Black' bracelet with matte enamel and plated hardware, signed and marked, inner diameter measures 64mm, 41.8 grams.

No box no papers.  
RRP: £660 **£80-120**



## Jewellery, Watches, Coins & Silver, 30th Dec, 2024 18:30

- 108 Four diamond-set rings; The first a diamond set ring of foliate design with asymmetric shoulders, estimated total diamond carat weight 0.04ct, ring head approximately 0.6cm x 1.5cm, set in white metal testing as platinum on a yellow metal shank testing as 18ct, size M ½; An additional diamond set ring of foliate design with an estimated total diamond carat weight of 0.09ct, ring head approximately 0.6 x 1.3cm, set in white and yellow metal testing as 18ct with a 14ct section at the base of the shank indicating repair or sizing, size S; An 18ct gold gypsy-style ring of cut out design set with two polki diamonds, three stones deficient, ring head pierced and engraved with foliate motifs, ring head approximately 0.7 x 1.4cm, UK hallmarks, Birmingham, 1917, Size L; A diamond and sapphire gypsy ring, featuring a central round brilliant diamond claw-set in a cross setting, flanked by two similarly set blue sapphires in a yellow metal band testing as 18ct size L ½; Total weight 8.7g (4). **£250-350**



- 109 Tiffany & Co. - a 'Tiffany Together' millegrain band ring, measuring approximately 3.1mm wide, in white metal marked 'PT950', with maker's marks, size O1/2; 6.0 grams  
RRP: £1400 **£150-200**



- 110 A group of jewellery items, including two shell cameo brooches, each depicting a portrait of a lady, in yellow metal mounts, one marked '750' and the other tested as 14ct gold, together with other jewellery items, the majority silver and costume pieces, including a turquoise-set pendant, a leaf brooch, a Victorian silver brooch and other items; 489.8 grams **£200-300**



- 111 Four gem set rings, a 9ct gold band and a 9ct gold St Christopher pendant; The first a gem set cluster ring, set with cubic zirconia and sapphires with possible replacements, two stones deficient, claw set in yellow metal testing as 10ct, size P; A sapphire and diamond trilogy ring of crossover design, set in yellow metal with convention marks for 9ct, size Q, A sapphire and cubic zirconia cluster ring of foliate design, with engraved shoulders, claw-set in yellow metal with convention marks for 9ct, size N ½; A five stone gem-set ring, three white sapphires interspersed with two blue pastes, claw-set in yellow metal, the setting testing as 10ct and the shank testing as silver, hallmarks rubbed, two solder lines on shoulder of ring indicating repair, size K; A 9ct gold band, 0.8cm wide, UK Hallmarks, London, 1981, size Q; A 9ct gold pendant of St Christopher, 2.8cm diameter, UK Hallmarks, Birmingham, 1968; Total weight 20.4g (6). **£250-350**



## Jewellery, Watches, Coins & Silver, 30th Dec, 2024 18:30

- 112 A small group of 9ct gold jewellery items, comprising a pearl-set floral brooch, an amethyst and pearl bar brooch, a sapphire-set bar brooch and a ladies Rotary manual wind wristwatch, with a snake chain bracelet strap, hallmarked 9ct gold, Birmingham, 1953; 26.0 grams (4) **£200-300**



- 113 A turquoise-set mesh-style bracelet, featuring four mesh rows, partially connected and interspaced with nine round turquoise cabochons, leading to a push bar clasp and safety chain, in yellow metal marked '14', the inner diameter measuring approximately 55mm; 22.4 grams **£180-220**



- 114 A 9ct gold bi-tone necklace and a yellow metal bracelet; The necklace with oval and stylised cross-lashing links with a tongue clasp and additional safety clasp, approximately 41cm long; A yellow metal bracelet of fancy link design with beaded details, secured with a tongue clasp and additional safety clasp, testing as 18ct, approximately 19.5cm long; Total weight 33.4g (2). **£500-700**



- 115 Three rings; comprising two smokey quartz cocktail rings, both featuring octagonal-cut smokey quartz, in yellow metal mounts tested as 18ct gold, sizes L1/2 and M1/2, together with a garnet-set navette-shaped dress ring, with openwork detailing, in a 9ct yellow gold mount, size O; 28.9 grams (3) **£250-350**



- 116 A Greek-style hinged bangle, in yellow metal with Greek key pierced design, testing as 18ct, secured with a tongue clasp with additional safety clasp, inner diameter approximately 5.9cm; Total weight 18.1g. **£500-700**





## Jewellery, Watches, Coins & Silver, 30th Dec, 2024 18:30

- 117 Two pendants comprising an Egyptian-style lotus flower pendant, tested as 18ct gold and measuring approximately 30mm, to a 9ct gold box link chain, together with a precious opal pendant, of arrowhead design, in a yellow metal marked '14K' to a 9ct gold paperlink chain necklace; 21.1 grams (2) **£300-500**



- 118 Two 9ct gold bracelets; The first a 9ct gold bracelet featuring two tiers of oval and stylised cross-lashing links, approximately 18.75cm long, UK Hallmarks, Sheffield import mark, 1992; The second a 9ct gold gate link bracelet, approximately 18.5cm long, UK Hallmarks, London import mark, 1993; Total weight 32.5g (2). **£400-600**



- 119 A turquoise-set bracelet, featuring two rows of open circle links, connected by claw-set round turquoise cabochons, in yellow metal tested as 14ct gold, to a push bar clasp and safety chain; 11.1 grams **£600-800**



- 120 A diamond-set fern brooch, an opal and amethyst brooch and a 9ct gold brooch; A diamond-set fern brooch, estimated total diamond carat weight 0.03ct, set in yellow metal testing as 18ct, with a locking safety catch; The opal and amethyst brooch of foliate motif design, set in yellow metal testing as 10ct, with a locking safety catch; The 9ct gold brooch of abstract design, UK Hallmarks, London import mark, 1967; Total weight 13.3g (3). **£250-350**



- 121 An anchor keyring, the anchor stamped '750' and suspended from a mesh chain, with Italian hallmarks, to a triangular carabiner clasp, measuring approximately 14cm long; 19.7 grams **£180-220**



## Jewellery, Watches, Coins & Silver, 30th Dec, 2024 18:30

- 122 A sapphire and diamond-set necklace, the V-shaped necklace set with single-cut diamonds and leading to a suspended pear-shaped sapphire, on a fine box link chain tested as 18ct gold, and a replaced gold-filled bolt ring clasp; 6.4 grams **£200-300**



- 123 A Mont Blanc Meisterstruck ballpoint pen, the gold-plated body of engine-turned design, without ink cartridges, in a black tubular case; 211.5 grams **£120-180**



- 124 A Must de Cartier ladies quartz wristwatch, with a black enamel face in a gilt case, marked '925', to a black leather strap, in an unbranded black velvet case; 86.8 grams **£200-300**



- 125 Four watches; comprising an Omega Seamaster wristwatch, with a stainless steel bracelet strap, in a branded box, together with a 9ct gold Omega ladies wristwatch and two additional gilt watches; 344.5 grams (4) **£200-300**



- 126 A tri-colour necklace and matching bracelet, with a fancy-link chain, the bracelet featuring a push bar clasp and the necklace featuring a lobster clasp, marked '750' and tested as 18ct gold; 33.6 grams (2) **£600-800**



## Jewellery, Watches, Coins & Silver, 30th Dec, 2024 18:30

- 127 Two gem set rings; A cubic zirconia solitaire ring with baguette-cut cubic zirconia channel-set shoulders, set in white metal testing as 18ct, size Q ½; A synthetic ruby and yellow metal signet ring, synthetic ruby approximately 1.4 x 1.2cm, yellow metal testing as 10ct, shank warped, size M ½; Total weight 11.6g (2). **£200-300**



- 128 A collection of jewellery items including a gem-set Victorian brooch marked '15ct', an amethyst and pearl bar brooch marked '9ct', a bead stick pin marked '15ct', a 9ct gold cameo ring, a 9ct gold wedding band, a 9ct gold signet ring, several gem-set rings and other items. **£300-500**



- 129 A sapphire and diamond ring and a turquoise coloured cabochon; The sapphire and diamond ring of geometric design, set with a 0.9 x 0.7cm baguette cut sapphire, flanked each side by two tiers of two polki diamonds, ring head approximately 1.2 x 2.0cm, set in yellow and white metal testing as 18ct and silver, Egyptian Hallmarks, circa November 1991, size M ½; The turquoise coloured cabochon ring set in a basketwork surround, on a split shank, yellow metal testing as 18ct, size L; Total weight 12.6g (2). **£150-250**



- 130 Three Mont Blanc wallets, in black leather, one of woven design, bi-fold with card slots and other compartments. (3) **£80-120**



- 131 An Egyptian reproduction of a Venetian ducat/zecchin, with Egyptian hallmarks, stamped with a fineness of 23.5, dated May 1925, 2.3g. **£150-250**



## Jewellery, Watches, Coins & Silver, 30th Dec, 2024 18:30

- 132 An open-faced pocket watch, marked '14K', having foliate and scrolling engraved detailing to the exterior, the dial having Roman numerals, with a wound movement, case width 33mm, together with a ladies manual wind wristwatch, with a yellow metal case marked '14K', to a black leather strap; 46.7 grams (2) **£300-500**



- 133 A collection of jewellery items, comprising four shell cameo brooches, in yellow metal mounts tested as 14ct and 18ct gold, depicting the Greek goddess Hebe, doves and the portrait of a lady, together with a pendant featuring the portrait of Sarah Siddons, as based on Gainsborough's portrait, in a yellow metal mount tested as 9ct gold, a coral-set pendant in yellow metal marked '14K', two other gilt shell cameo brooches, a jade brooch of foliate design and a gem-set necklace featuring sapphire, ruby and emerald beads; total weighable: 263.1 grams (10) **£200-300**



- 134 A blue topaz and diamond ring, bezel-set with a mixed oval-cut topaz, of vivid blue colour, measuring approximately 9 x 7mm, flanked by two diamonds, one rose-cut, in a white metal setting testing as platinum to a yellow metal shank testing as 18ct, size Q, 3.1g. **£200-300**



- 135 An emerald and diamond ring, the emerald claw set and flanked by shoulders of three mixed-cut diamonds, set in white metal stamped and testing as 18ct and platinum, size R, 1.6g. **£200-300**



- 136 Two watches; comprising a Rolex dress watch, with manual wind movement, featuring a square yellow metal case tested as 9ct gold, together with a Rolco ladies wristwatch, with a manual wind movement, in a 9ct gold case, to a gilt expandable bracelet strap; 42.0 grams (2) **£300-500**



## Jewellery, Watches, Coins & Silver, 30th Dec, 2024 18:30

- 137 Two emerald rings and one chrysoprase ring; One claw-set oval-cut emerald ring in a navette-shaped setting, flanked by two stone diamond and possible replacement shoulders, in a carved mount to a plain shank marked '18ct' and 'pla', size N; One claw-set oval-cut emerald ring, flanked by two stone diamond and possible replacement shoulders, in a yellow and white metal mount, shank marked '750', size R; A claw-set oval-cut chrysoprase ring, flanked by three stone diamond and possible replacement shoulders, to a white metal mount testing as 18ct, size R; Total weight 6.8g (3). **£300-500**



- 138 A collection of three ladies wristwatches comprising a Dior stainless steel quartz wristwatch, a Zodiac Desert Falcon stainless steel quartz wristwatch having mother of pearl dial, and a Rado Diastar gold plated mechanical wristwatch. **£250-350**



- 139 A group of pocket watches and other items including a Markswain open-faced gilt pocket watch, a gilt half-hunter pocket watch, an open-face pocket watch by Elgin and other pocket watches together with a Samar manual wind wristwatch, with a yellow metal case marked '18K', a Lorus wristwatch, a Timex wristwatch, several other watches and a souvenir Blackpool vesta case; 900.0 grams **£200-300**



- 140 A Longines Dolce Vita Ladies Wristwatch  
**Model:** L5.255.8  
**Serial:** 45866419  
**Year:** 2000s  
**Case Material:** 18 Carat  
**Case Diameter:** 21mm  
**Dial:** Enamel  
**Numerals:** Roman  
**Movement:** Quartz  
**Strap:** Black Leather  
**Buckle:** Clasp  
**Box:** No  
**Papers:** No **£300-500**



## Jewellery, Watches, Coins & Silver, 30th Dec, 2024 18:30

141 A TAG Heuer Link Ladies Wristwatch

**Model:** WAT1311

**Serial:** RUC6812

**Year:** 2000s

**Case Material:** Stainless Steel

**Bezel:** Stainless Steel

**Case diameter:** 32mm

**Dial:** Enameled

**Numerals:** Diamond Dot

**Movement:** Quartz

**Calibre:** N/A

**Functions:** Date Aperture

**Strap:** Integrated Stainless Steel

**Buckle:** Butterfly Deployant

**Box:** No

**Papers:** No **£250-350**



142 A Tudor Oyster Royal Gentleman's Wristwatch

**Model:** 7903

**Serial:** 76825

**Year:** 1950s

**Case Material:** Stainless Steel

**Case Diameter:** 32mm

**Dial:** Tropical Silvered

**Numerals:** Baton and Arabic

**Movement:** Mechanical

**Strap:** Stainless Steel Bracelet

**Buckle:** Deployant Clasp

**Box:** No

**Papers:** No **£200-300**



143 An Omega Seamaster Gentleman's Wristwatch

**Serial:** 135.012

**Case Material:** Gold Plated

**Case Diameter:** 33mm

**Dial:** Silvered

**Numerals:** Baton

**Movement:** Cal 601 Automatic

**Strap:** Black Leather

**Buckle:** Clasp

**Box:** No

**Papers:** No **£100-200**



144 An Omega Seamaster Quartz Gentleman's Wristwatch

**Model:** 1960313

**Case Material:** Gold Plated

**Case Diameter:** 33mm

**Dial:** Gilt

**Numerals:** Baton

**Movement:** Quartz

**Strap:** Black Leather

**Buckle:** Clasp

**Box:** No

**Papers:** No **£100-200**



## Jewellery, Watches, Coins & Silver, 30th Dec, 2024 18:30

- 145 A collection of twelve cased silver proof coins, with certificates, comprising: 1996 £2 Celebration of Football, D-Day Commemorative Fifty Pence, 2000 UK Silver Five Pounds, QEII Coronation 40th Anniversary Crown, 1999 Alderney Total Solar Eclipse £2, 1995 Royal Mint One Pound Coin, Queen Mother 80th Birthday Commemorative Crown, 1981 Royal Wedding Commemorative Coin, 1996 QEII 70th Birthday Crown, 1995 UK WWII Two-Pound Coin, Kingdom of Nepal 500 Rupees and Queen Mother 90th Birthday Crown, together with assorted further cupro-nickel and other commemorative coins. **£200-300**



- 146 An Edwardian silver potpourri box and cover by William Comyns & Sons, with pierced foliate design and embossed image of a golfer to the cover, gilt interior, UK Hallmarks, London, 1903, approximately 7 x 7cm, 2.33ozt. **£100-150**



- 147 An Art Deco silver mug by Walker and Hall, with geometric cut cardwork base, UK Hallmarks, Sheffield, 1937, approximately H13 x W12.5 x D8.8cm, 9.32ozt. **£100-150**



- 148 A group of items consisting of nine open-face pocket watches, two watch faces, two watch chains and one charm, a wristwatch and three spare watch keys. This lot also includes a yellow metal bangle testing as 18ct, an imitation pearl necklace and a pair of paste ear hoops; Total weight **£200-300**



- 149 A collection of silver comprising of four spoons, two forks, a sugar tong, two silver snuff boxes embossed with sea scrolls, a silver purse, a silver cigarette case, a silver salt cellar with inner missing, two silver hairbrushes, two silver mirrors and one glass jar with silver lid; Total weighable 24.11ozt. **£300-500**



## Jewellery, Watches, Coins & Silver, 30th Dec, 2024 18:30

150 A group of Old English pattern flatware, all hallmarked in London, varying dates; Nine dinner forks, dated 1824, makers mark for George Piercy; Two dinner forks with crown and anchor detail, dated 1854, makers mark for Chawner & Co (George William Adams); Five salad forks, some date marks indistinguishable, others dated 1812, makers mark WC, possibly for William Chawner; Five serving spoons, dated 1824 and 1812, some marked with makers marks for George Piercy; Three serving spoons with monogram 'W' and 'WB', dated 1807 and 1818, Thomas Wallis makers marks to two spoons; One serving spoon with crown and anchor detail, dated 1846; One dinner spoon, dated 1797; Three dessert spoons, dated 1824, makers mark for George Piercy; Six dessert spoons, dated 1799, 1804, 1813, various makers marks for Duncan Urquhart & Naphtali Hart, Richard Crossley and Richard Turner; One fish knife, Hallmarks indistinguishable; Total weight 65.02ozt. **£700-900**



151 A group of Fiddle Pattern Flatware, most with London hallmarks; Ten serving spoons, dated 1812, 1837, 1842, 1894, various makers marks for Charles Lias, Mary Chawner & George W Adams, William Gibson & John Lawrence Langman; Six dessert spoons, four dated 1841, two dated 1894, makers marks for William Gibson & John Lawrence Langman and Chawner & Co respectively; One sugar spoon, dated 1842; Five dinner forks engraved with initial monogram, dated 1856, markers mark for A B Savory & Sons; Four dinner forks, one with Dublin hallmarks, dated 1823 and with makers mark for Matthew West, three with London hallmarks, dated 1841 and 1892, with makers marks for Chawner & Co and John Aldwinckle & Thomas Slater respectively; Nine dessert forks, five dated 1856, makers marks for Thomas Wallis, four dated 1830, 1841, 1891, 1894, makers marks for William Theobalds, Chawner & Co, John Aldwinckle & Thomas Slater and William Gibson & John Lawrence Langman respectively; Total weight 69.54ozt **£800-1,200**



152 Two diamond set rings; One diamond-set ring in tri-coloured metal, one diamond deficient, estimated total diamond carat weight 0.04ct, metal testing as 18ct, size N; One diamond-set ring of ridged design, estimated total diamond carat weight 0.22ct, yellow metal testing as 14ct, size N; Total weight 12.3g **£200-300**





## Jewellery, Watches, Coins & Silver, 30th Dec, 2024 18:30

- 153 A group of Silver and white metal items; A Mappin & Webb silver sauce boat with gadrooned edge detail, hallmarks for London, dated 1976; A pair of silver filled candlesticks with hallmarks for Birmingham, 1983, makers mark for W I Broadway & Co; A silver candle snuffer with squirrel detail and wooden handle, by Brian Leslie Fuller, hallmarks for London, 1986; Two scalloped caddy spoons, one with hallmarks for Birmingham, dated 1994, the other stamped 'E', 'P', 'N', 'S'; Six silver and white metal thimbles; A Thai white metal bowl, labelled in Thai as Alloy Silver, with repoussé detail; A Greek white metal silver dish, stamped 925; A white metal fruit dish, stamped 925; A white metal footed bow with images of a ram, lion and double-headed eagle, stamped 830; A small white metal footed bowl with handles of foliate design and scalloped edging; Total weighable 9.53ozt. **£300-500**



- 154 Gucci - a wristwatch and bezel set, circa 1980s, with a quartz movement and gilt case measuring 26mm with multi-coloured exchangeable bezels of a range of colours on a gilt metal bangle bracelet. Complete set of bezels and box 11/12 06710972 **£150-250**



- 155 A French Art Deco cigarette case, of rectangular form, cover engraved with an illustration of two cartoon ducks, and decorated with enamel, signed 'L. Collot', side push-in thumbpiece open to reveal a gilt interior. Stamped 'Unis France' for National Inter-Union of Collective Brands. 10.9 x 8.5 cm. **£100-150**



- 156 A French Metal Alliage Blanc part canteen with acanthus scrollwork finials, comprising twelve tablespoons, twelve table forks, twelve teaspoons and a soup ladle, cased. **£300-500**



## Jewellery, Watches, Coins & Silver, 30th Dec, 2024 18:30

- 157 A group of Silver and white metal items; Two square based silver candlesticks of fluted column design with capitals of foliate design, hallmarks for Sheffield 1883, makers mark for James Kebberling Bembridge; A silver vase with floral chasing and scalloped rim, London 1902, by Charles Boyton; A silver box, with wooden interior and hinged cover, with engraving from the London Management of Roneo Ltd October 1928, hallmarked for Birmingham, 1928, S Blanckensee & Son Ltd; A silver cigarette case, with internal engraving and external monogram, internally gilt, Birmingham 1945, Adie Brothers Ltd; A silver cigarette case of domed rectangular form, engraved with pinstripes and monogram, Birmingham 1915, Samuel M Levi; A silver card case, engraved with initials 'SG' and 'Nissan 18 5707' with engraved scrolling designs, Birmingham 1957, Edward Smith; Three fiddle pattern silver dinner spoons, London 1934, John Round & Son Ltd; An 18th Century Dutch serving spoon, of rattail pattern, back of finial struck with the lion rampant mark indicating 875 fineness, axe mark used as a tax mark for old silver; An early 19th Century German white metal box with hinged cover and gadrooned border, on four foliate 'feet', struck with Berlin city mark and makers mark 'Godet'; A silver Kiddush cup, London 1924, Rosenzweig, Taitelbaum & Co; A silver wine goblet, engraved with foliate design, Birmingham 1931, Britton, Gould & Co; A silver wine goblet, foot detached, Birmingham 1874, Elkington & Co; A silver dish of pierced oval form, to four feet, by Atkin Brothers, London; A Dunhill lift arm lighter, with engine turned design, Patent number 390107, Registered Design number 737418; Total weighable approximately 131.45ozt. **£450-650**



- 158 A collection of silver items; to include a large round pressed glass jar, silver mounted tortoiseshell cover with pique garland decorations, by Docker & Burn, Birmingham 1921; a silver trinket box in the form of a miniature vanity desk, hinged cover with pique work on tortoiseshell inset, open to reveal lined interior, by Charles & Richard Comyns, London 1915; a silver mounted glass tyg by Henry Bourne, Birmingham 1907; a silver mounted glass jar, with blue guilloché enamel cover, Birmingham 1936; a pair of George IV silver sugar tongs; a Chinese export white metal miniature sedan chair by Wang Hing; and a Russian niello salt cellar on three ball feet; Total weighable 7.94 ozt. (7) **£150-250**



- 159 A Morgan dollar coin collection of 22 from 1878-1890, 1896-1902, 1904 and 1921; and a set of 6 Peace dollar coins from 1922-1926 and 1935; all individually cased. (28) **£800-1,200**



## Jewellery, Watches, Coins & Silver, 30th Dec, 2024 18:30

- 160 A pair of silver serving spoons, of fiddle pattern, handle engraved with monogram 'SG', London, 1816, John Lias; A pair of silver serving spoons, of old English pattern, London, 1814; Three white metal serving spoons, of rattail pattern, crest at finials, hallmarks indistinguishable, makers mark AR; Six silver coffee spoons, of rattail pattern, London, 1931, Josiah Williams & Co; A silver toast rack, Birmingham, 1929, G Unite & Sons & Lyde Ltd; A silver propelling pencil, of engine turned design, London, 1968, Yard . O . Led, in fitted box; A pair of plated and loaded candlesticks; Total weighable 21.74ozt. **£300-500**



- 161 A collection of six half hunter and open face pocket watches, comprising a Le Roy a Paris silver pocket watch, a Prima silver pocket watch and four further small silver pocket watches, gross weight 324.1g **£200-300**



- 162 Three gold plated pocket watches comprising an Elgin having keyless wound movement and white dial with cartouche externally, diameter 50mm, a further Elgin having white dial with keyless wound movement and small second aperture, diameter 50mm, and a third Elgin having white dial, missing glass, with engine turned decoration to exterior, diameter 50mm. **£150-250**



- 163 A collection of six silver half hunter and open face pocket watches comprising a Sans Rival silver pocketwatch on Masonic fob, together with five further silver pocketwatches, gross weight 351.2g **£200-300**



- 164 A gentleman's 9 carat wristwatch, in the Art Deco style, bearing foliate scroll decoration to hallmarked case, movement and dial unsigned, together with an Avia ladies 9 carat wristwatch and a Janex ladies 9 carat wristwatch, gross weight 59.6g **£200-300**



## Jewellery, Watches, Coins & Silver, 30th Dec, 2024 18:30

- 165 A 9ct cased W. Hird pocket watch and chain, being hallmarked to outer and inner dust covers and having white enamel dial with small second and Roman numerals, chain being hallmarked on clasp, having original fitted case, gross weight 113.9g **£400-600**



- 166 Two silver Christening egg cups and spoons in fitted cases, one with an associated hallmarked spoon, another white metal egg cup, marked 900 and spoon marked 850 another silver egg cup and spoon with a napkin ring in fitted case, and a Trabakopoulos white metal egg cup stamped 925 with spoon marked 800 in pouch and box, 4.9ozt hallmarked silver. (5) **£200-300**



- 167 A torque bracelet in 9ct yellow gold, with spherical terminations, struck with Birmingham assay marks, inner diameter 6.2 cm, 12.6 grams. **£300-500**



- 168 A commemorative Iranian medal, in rose-coloured metal pendant mount, with associated box link chain. The hexagonal coin was made to commemorate the 50th anniversary of the Pahlavi dynasty in 1976. The chain marked '9k'. Medal stamped '900'. Medal and mounted weigh 12.49 grams. Chain 71 cm length. 5.9 grams. **£500-700**



- 169 A three-row graduated pearl bracelet and a George III mourning fichu pin; the bracelet comprising three strands of graduated round pearls, from 4.2 to 6.5 mm, with metal spacers, to a box clasp embellished with a foiled-back amethyst floral cluster, metal testing as 14ct, overall length 18.6 cm; the brooch centred with a glazed hairwork compartment framed by double row of split pearl borders, brooch fittings to the back, metal testing as 14ct, 2.0 cm wide; Total weight of items 26.1 grams. (2) **£200-300**



## Jewellery, Watches, Coins & Silver, 30th Dec, 2024 18:30

- 170 A 1992 Proof Sovereign, in capsule and Royal Mint box, the certificate numbered 2058. **£350-400**



- 171 Three gem set rings and an Eterna ladies wristwatch; A cultured pearl and 9ct gold ring, the pearl centrally set with a radiating bright cut surround, hallmarks for Birmingham, 1991, C P S Jewellery Co Ltd, size R ½; One yellow metal and amethyst ring, three square cut amethysts, collet set to a thick band, yellow metal band testing as 14ct, internally stamped '585', size M; A white metal and coral coloured cabochon locket ring, one central bezel-set coral-coloured oval cabochon, encircled by ten smaller round coral-coloured cabochons set in floral bezels stamped 'Sterling' to internal hinged cover, white metal testing as silver, size O; A ladies Eterna wristwatch, case 14mm, testing as 18ct, to a flat woven strap, marked 9ct gold, in fitted box; Total weighable 19.1g (4) **£250-350**



- 172 Two 18ct gold rings; An 18ct gold ring, with floral engraving, Chester, 1891, size Q ; A red paste signet ring, set in 18ct gold, with tapered shoulders of foliate design, Birmingham, 1897, makers mark 'CG', size N; Total weight 10.0g (2). **£300-500**



- 173 An 18ct gold band ring, with internal engraving '*Hilde. 1 Jan 1912*', London, 1910, size R; Total weight 11.0g **£300-500**



## Jewellery, Watches, Coins & Silver, 30th Dec, 2024 18:30

- 174 Two rings; A 22ct gold ring, with rubbed engraving, Birmingham, 1960, makers mark 'A&W', size K, weight 3.4g; A plain band, testing as platinum, stamped 'Platinum', size O, weight 3.1g (2). **£150-200**



- 175 A sapphire and diamond 9ct gold ring, one central claw-set sapphire flanked by two smaller sapphires, interspersed with two diamonds, estimated total diamond carat weight 0.02ct, set in 9ct gold, hallmarks for London, 1994, makers mark 'G & TJ', size P, weight 2.9g **£250-350**



- 176 A gold necklace and yellow metal and gold chains; A gold and cultured pearl necklace, featuring graduating fluted yellow metal beads testing as 18ct, interspersed with graduating cultured pearls, to a yellow metal chain hallmarked as 18ct gold, dated 1962, with an additional yellow metal extension chain testing as 14ct and lobster clasp testing as 9ct, length approximately 50.5cm; A broken yellow metal rope chain testing as 14ct; A broken cable chain with clasp testing as 14ct and 9ct respectively; A plated rope chain bracelet, length approximately 8cm; Total weighable 27.3g (4). **£300-500**



- 177 An Etruscan Revival style brooch, a signet ring and a 9ct gold box chain bracelet; The memorial brooch, of Etruscan Revival design, set with cultured split pearls and detailed with filigree, with a window and C clasp to the reverse, yellow metal with bloomed finish testing as 14ct, brooch approximately 3.4 x 3.1cm; An onyx plaque signet ring with central yellow metal monogram, yellow metal testing as 10ct, size S ½, boxed; A 9ct gold box chain bracelet with spring ring clasp, London import assay marks, dated 1978, length approximately 5cm, weight 2.3g; Total weight 16.2g (3). **£200-300**



- 178 A pair of Georg Jensen earrings and a Tiffany & Co compact mirror; A pair of Georg Jensen white metal drop earrings, designed by Ole Kortzau, number 363 of drop grape design, length approximately 3cm, the reverse stamped '925 S' and marked with Georg Jensen makers mark, boxed; A Tiffany & Co pocket mirror, embossed with bow design, marked with London import mark to the side and dated 19995, stamped 'Tiffany & Co. 925 Sterling', with pouch; Total weight 71.7g (2) **£150-250**



## Jewellery, Watches, Coins & Silver, 30th Dec, 2024 18:30

- 179 A quantity of jewellery and other items; to include examples of a Norwegian enamel brooch of geometric design, by Ivar T Holth; a string of faceted amber bead necklace; a Ciro of Bond Street three-row graduated cultured pearl necklace with clasp set with paste, along with a certificate; some white metal filigree brooches in the form of a butterfly, flowerhead and dagger; and some other ladies' watches, beaded necklaces, loose earrings, cufflinks and bracelets etc. **£200-300**



- 180 A silver sauce boat, a pair of silver cauldron salts, silver wish-bone sugar tongs, two silver plated lady's purses, a Continental white metal cased trench watch stamped 800, A miniature Quinn pocket watch on chain, a Mondonia pocket watch on chain, two silver plated vesta cases, a A.Baarthelay bangle watch, a pill box, a pair of silver plated grape scissors, a miniature button hook with a filled silver handle, and a collection of pencil holders, 7.3ozt weighable **£250-350**



- 181 Louis Vuitton - a Neverfull MM tote bag in Damier Azur coated canvas, with Rose Ballerine lining, top hook closure, equipped with tanned leather trims, side laces and top handles, together with a detachable zipped pouch. W31 x H28 x D14 cm. In dust bag and boxed, no papers. **£500-700**



- 182 Louis Vuitton - an Eva clutch bag in Damier Azur coated canvas, with signed plaque to the front, gold-tone hardware, attached with an original chain shoulder strap and a later-added chain with charms. Boxed with papers, no dust bag. **£200-300**



- 183 Louis Vuitton - a Pernelle shopper tote in beige galet taurillon leather, featuring an applique LV signature at the bottom corner, locket front pocket, leather lined, equipped with two rolled top handles, silver-tone hardware, studs on the bottom. 2018. W31 x L25 x D15 cm. With dust bag and papers. **£250-350**



## Jewellery, Watches, Coins & Silver, 30th Dec, 2024 18:30

- 184 Louis Vuitton - Three scarves; One Etole Leopard Blurry Stole fading from pink to blueish grey, with blue monogram printed to one edge, approximately 1.4m x 1.9m, with papers and dustbag; One Damier Azur Etole Alize Stole in cream and blue, with Louis Vuitton tag, approximately 1.25m x 1.80m, with papers and dustbag; One Brown and Gold Monogram Logomania Shine woollen scarf, with Louis Vuitton tag, approximately 0.31m x 1.76m with papers and dustbag. All scarves in one Louis Vuitton bag. **£300-500**



- 185 Louis Vuitton - LV Initials 30MM Reversible Belt in Monogram Canvas and Rose Poudre leather, approximately 100.5cm long and 3cm wide, with initial buckle approximately 3.5 x 3.5cm. With Box. **£200-300**



- 186 A Louis Vuitton X Stephen Sprouse graffiti signature leopard stole, brown colour with purple accents, H195 x W135 cm, boxed with papers; together with an unbranded leopard scarf in an unassociated box. (2) **£200-300**



- 187 Louis Vuitton - an Alma BB bag in monogram coated canvas and tanned leather, top zipper closure with a padlock, two keys in clochette, studded leather base, two rolled top handles and a detachable shoulder strap, gold-tone hardware. W23.5 x H17.5 x D11.5 cm. In dust bag and box, no papers. **£400-600**



- 188 Louis Vuitton X Yayoi Kusama - 'Infinity dots' On the Go MM, circa 2023, multicoloured dots on brown monogram coated canvas, with tanned leather trims and rolled top handles, gold-toned hardware. W33 x H26 x D15 cm. With dustbag, box and gift receipt. **£800-1,200**





## Jewellery, Watches, Coins & Silver, 30th Dec, 2024 18:30

- 189 Louis Vuitton - a Tivoli GM shoulder bag in brown monogrammed coated canvas, with tanned leather trims and gold-toned hardware, top zipper closure. W33 x H29 x D16 cm.

Boxed with paperwork, no dustbag. **£250-350**



- 190 Louis Vuitton - a Turenne MM handbag in monogram coated canvas, zipper closure opens to reveal a burgundy canvas lined interior, equipped with a pair of rolled top handles and a shoulder strap in tanned leather, gold-tone hardware. 2014. W26.5 x H23 x D14.5 cm.

No dust bag no box, with papers. **£400-600**



- 191 Louis Vuitton - a Jersey tote in Damier Ebene coated canvas and creme leather, top zipper closure opens to reveal a beige suede-lined interior with compartments, equipped with brown leather shoulder straps, and a detachable wide strap in creme-coloured leather, gold-toned hardware, studded base. W31 x H27 x D14 cm.

In dust bag together with paperwork. **£600-800**



- 192 Louis Vuitton - a Cabas Rivington tote in Damier Ebene coated canvas, bucket shape with zipper gussets, lined with red canvas and equipped with two leather straps, gold-tone hardware. W28 x H28 x D15 cm.

With dustbag and papers. **£300-500**



- 193 Louis Vuitton - a large So Shine monogram shawl, jacquard weave in brown tones, 142.5 x 142.5 cm.

Boxed, no papers. **£200-300**



## Jewellery, Watches, Coins & Silver, 30th Dec, 2024 18:30

- 194 Louis Vuitton - a large reverse dots denim shawl, monogram pattern in brown and caramel, with dotted motifs composed of silver and gold-tone crystals, 142.5 x 142.5 cm.  
Boxed, no papers. **£200-300**



- 195 Hermès - a muffler in camel wool and cashmere, with fringe edges and an embossed leather 'H' at the corner. F/W 2017.  
W75 x L205 cm.  
In paper bag with receipt. **£150-200**



- 196 Cartier - a Happy Birthday 'Le 18H' tote bag in tangerine calfskin leather, embossed with double C logo motifs, lined with suede, equipped with shoulder straps and a detachable pouch. W34.5 x H35 x D9 cm.  
In dust bag, together with a copy of the paperwork. **£150-250**



- 197 A Gucci Ophidia straw shopping tote, with navy leather shoulder straps, matching trims and gold-tone hardware; a Gucci GG Marmont small Matelassé shoulder bag in black leather, chevron padded and gold-tone hardware; and a Tiffany & Co. reversible tote shopper in black leather with silver-tone hardware, together with a pouch and receipt. (3)  
**£250-350**

